

Product

Catalogue

VERSION 2 - 2021



WELCOME TO UNIVOLT UK

What We Do

Dietzel Univolt manufacture an appropriate cable management solution for any kind of electrical installation, confident of our superior quality, our features characterise the extensive product choice of conduits, trunkings and accessories.

Our Approach

Univolt UK stocks and distributes from our Hertfordshire distribution centre a wide range of cable management products, with a range of over 10,000 items Univolt products can be found on major construction sites and important building projects not only in the UK but worldwide.

Our overall annual production comprises more than 120 million meters of conduits and 60 million fittings, manufactured to the highest international standards.

Our Team

We are an independent family enterprise with a strong international orientation, each of our sales orientated staff play an important role in customer retention and company growth, all our staff are dedicated to ensuring our customers are completely satisfied with our products and services.

Mission

Our philosophy is building reliable long-term partnerships with our customers and to maintain Univolt's brand name for innovative spirit and culture first class product quality and the very highest service levels.

Principles

To attain excellent standards and continue to be a benchmark within the cable management industry To create strong relationships with our customers and suppliers.

Maintain integrity, honesty and high ethical standards. Constantly invest in innovation and develop new products and processes.

Deliver quality product and services to our customers Strive to improve every aspect of our business.

David Mattin
Managing Director (UK)

CONTENTS

4 - 5 A Brief Guide To Plastic Conduit and Fire Safety
6 - 9 Rigid Conduit & Accessories
10 - 11 Mini Trunking
12 - 13 Maxi Trunking
14 - 15 Starline Trunking
16 - 17 Starline SLXL Dado Trunking
18 Starline SLR 3 Comp Curved Trunking
19 Oval Conduit / Channel / Surface Boxes
20 PVC Bench Trunking
21 Aluminium Power Pole
22 Power Posts
23 Cavity Floor Boxes & Plates
24 Twin Wall Ducting
25 Flexible Conduit PVC-U
26 - 27 Flexible Conduit Contractor Packs / Enclosure Boxes/ Accessories
28 - 31 HFT - Next Generation Conduit
32 - 35 Case Studies



"In pursuance of our policy of continued product improvement Dietzel-Univolt reserve the right to change the design or specification of its products without notification"

"Every care has been taken to ensure that the information contained in this catalogue is correct at time of going to print"

"All dimensions quoted are approximate and should be checked against the technical data sheet before installation, images are typical and not binding. All drawings, photographs/image layout & designs are considered property of Dietzel-Univolt"



A Brief Guide to Plastic Conduit and Fire Safety

Safety should be the main concern when approaching an electrical installation. Product specification - ensuring the correct solution is selected to suit the application at hand is a key element of this responsibility. This brief guide provides an overview of the product properties of different types of plastic conduit...

- PVC - Polyvinyl Chloride
- PVC LSF - Lower Smoke Fume
- LSF0H - Low Smoke Fume Zero Halogen

What is PVC?

Ideal for low risk buildings, correctly specified PVC products offer flexibility and cost advantages over LSFOH.

What is PVC/LSF?

An incremental improvement over standard PVC products, increased flame retardancy and reduced smoke output compared to standard PVC.

What is LSFOH?

Also known as LSZH, LSOH, LSFH, OHLS, ZHFR

Containing less than 0.5% halogens and minimal smoke generation, ideal for public buildings, airports, railways, commercial buildings data centres and all escape routes.

Benefits of PVC/LSF?

Lower Smoke Fume (PVC LSF) offers lower emissions than standard PVC hence PVC LSF lies somewhere between that of PVC and LSFOH.



Reduces smoke release by up to 65% in the first 4 minutes of a fire



Lower smoke - Increased flame retardancy

Benefits of LSFOH?

Low Smoke Fume Zero Halogen (LSFOH) conduits are not only characterised by the fire retardant performance but also by the halogen-free properties



Low smoke according to IEC 60134



Zero Halogen to IEC 60754-1 / 60754-2



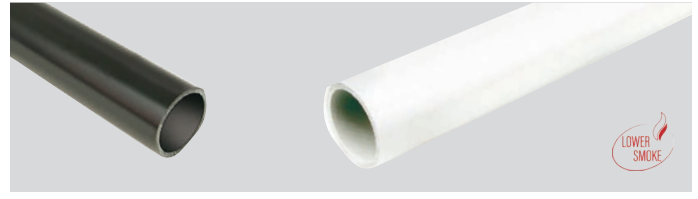
Flame retardant to IEC 61386

RIGID CONDUIT LIGHT



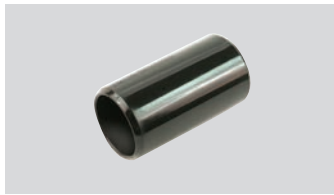
Part No.	A-Code	Description	Pk Qty
BSSL 20 WH	61882	20mm Conduit Light White (3m)	90m
BSSL 25 WH	61884	25mm Conduit Light White (3m)	90m
BSSL 20 BK	24912	20mm Conduit Light Black (3m)	90m
BSSL 25 BK	34997	25mm Conduit Light Black (3m)	90m

RIGID CONDUIT HEAVY LSF



Part No.	A-Code	Description	Pk Qty
BSSH 20 WH LSF	103718	20mm Conduit Heavy White LSF (3m)	90m
BSSH 25 WH LSF	103719	25mm Conduit Heavy White LSF (3m)	90m
BSSH 20 BK LSF	105790	20mm Conduit Heavy Black LSF (3m)	90m
BSSH 25 BK LSF	105791	25mm Conduit Heavy Black LSF (3m)	90m

COUPLERS BLACK



COUPLERS WHITE



Part No.	A-Code	Description	Pk Qty
SM 20 BK	20663	20mm Couplers Black	100pcs
SM 20 WH	20670	20mm Couplers White	100pcs
SM 25 BK	20664	25mm Couplers Black	50pcs
SM 25 WH	20671	25mm Couplers White	50pcs

EXPANSION COUPLER WHITE



Part No.	A-Code	Description	Pk Qty
EC 20 WH	9338	20mm Expansion Coupler White	50pcs
EC 25 WH	9339	25mm Expansion Coupler White	25pcs

SPACER BAR SADDLES BLACK

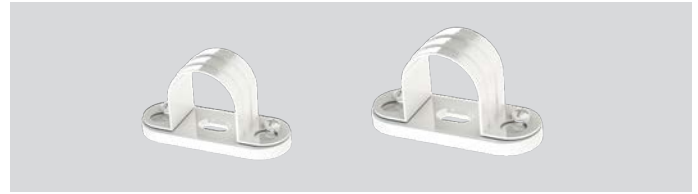


SPACER BAR SADDLES WHITE



Part No.	A-Code	Description	Pk Qty
SBS 20 BK	8900	20mm Spacer Bar Saddles Black	50pcs
SBS 20 WH	9248	20mm Spacer Bar Saddles White	50pcs
SBS 25 BK	8901	25mm Spacer Bar Saddles Black	50pcs
SBS 25 WH	9249	25mm Spacer Bar Saddles White	50pcs

METAL COATED WHITE SPACER BAR SADDLES



Part No.	A-Code	Description	Pk Qty
UNISB20SADDLE	103249	20mm Metal Coated White Spacer Bar Saddles	100pcs
UNISB25SADDLE	103250	25mm Metal Coated White Spacer Bar Saddles	100pcs

CLIPS BLACK



CLIPS WHITE

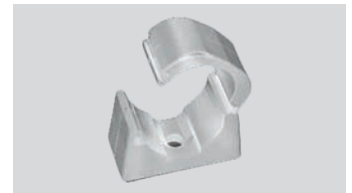


Part No.	A-Code	Description	Pk Qty
CL 20 BK	82179	20mm Clips Black	100pcs
CL 20 WH	82180	20mm Clips White	100pcs
CL 25 BK	82216	25mm Clips Black	100pcs
CL 25 WH	82217	25mm Clips White	100pcs

NYLON KWIK CLIP BLACK



NYLON KWIK CLIP WHITE



Part No.	A-Code	Description	Pk Qty
HKS 20 WH	57247	20mm Nylon Kwik Clip White	100pcs
HKS 20 BK	57245	20mm Nylon Kwik Clip Black	100pcs
HKS 25 WH	57250	25mm Nylon Kwik Clip White	100pcs
HKS 25 BK	57248	25mm Nylon Kwik Clip Black	100pcs



FEMALE ADAPTORS BLACK



FEMALE ADAPTORS WHITE



Part No.	A-Code	Description	Pk Qty
AFT/MBS 20 BK	9086	20mm Female Adaptors Black	100pcs
AFT/MBS 20 WH	10184	20mm Female Adaptors White	100pcs
AFT/MBS 25 BK	9087	25mm Female Adaptors Black	50pcs
AFT/MBS 25 WH	10185	25mm Female Adaptors White	50pcs

MALE ADAPTORS BLACK



MALE ADAPTORS WHITE



Part No.	A-Code	Description	Pk Qty
AMT/LR 20 BK	9548	20mm Male Adaptors Black	100pcs
AMT/LR 20 WH	9600	20mm Male Adaptors White	100pcs
AMT/LR 25 BK	9549	25mm Male Adaptors Black	50pcs
AMT/LR 25 WH	9601	25mm Male Adaptors White	50pcs

NORMAL BEND BLACK



NORMAL BEND WHITE



Part No.	A-Code	Description	Pk Qty
NB 20 BK	8885	20mm Normal Bend Black	25pcs
NB 20 WH	9227	20mm Normal Bend White	25pcs
NB 25 BK	8886	25mm Normal Bend Black	10pcs
NB 25 WH	9228	25mm Normal Bend White	10pcs

INSPECTION BEND BLACK



INSPECTION BEND WHITE



Part No.	A-Code	Description	Pk Qty
IB 20 BK	9095	20mm Inspection Bend Black	50pcs
IB 20 WH	9257	20mm Inspection Bend White	50pcs
IB 25 BK	9096	25mm Inspection Bend Black	25pcs
IB 25 WH	9258	25mm Inspection Bend White	25pcs

INSPECTION ELBOW BLACK



INSPECTION ELBOW WHITE



Part No.	A-Code	Description	Pk Qty
IE 20 BK	16901	20mm Inspection Elbow Black	50pcs
IE 20 WH	16903	20mm Inspection Elbow White	50pcs
IE 25 BK	16902	25mm Inspection Elbow Black	20pcs
IE 25 WH	16904	25mm Inspection Elbow White	20pcs

INSPECTION TEE BLACK



INSPECTION TEE WHITE



Part No.	A-Code	Description	Pk Qty
IT 20 BK	9092	20mm Inspection Tee Black	50pcs
IT 20 WH	9254	20mm Inspection Tee White	50pcs
IT 25 BK	9093	25mm Inspection Tee Black	20pcs
IT 25 WH	9255	25mm Inspection Tee White	20pcs

LOCKRINGS BLACK



LOCKRINGS WHITE



Part No.	A-Code	Description	Pk Qty
LR 20 BK	9542	20mm Lockrings Black	250pcs
LR 20 WH	9594	20mm Lockrings White	250pcs
LR 25 BK	9543	25mm Lockrings Black	200pcs
LR 25 WH	9595	25mm Lockrings White	200pcs

LOCKNUTS BLACK



LOCKNUTS WHITE



Part No.	A-Code	Description	Pk Qty
LN 20 BK	9536	20mm Locknuts Black	200pcs
LN 20 WH	9588	20mm Locknuts White	200pcs
LN 25 BK	9537	25mm Locknuts Black	100pcs
LN 25 WH	9589	25mm Locknuts White	100pcs



RIGID CONDUIT & ACCESSORIES

TERMINAL BOX 1 WAY BLACK, WHITE



Part No.	A-Code	Description	Pk Qty
CB 20/1 BK	104251	20mm Terminal 1 Way Box Black	25pcs
CB 20/1 WH	104241	20mm Terminal 1 Way Box White	25pcs
CB 25/1 BK	104256	25mm Terminal 1 Way Box Black	25pcs
CB 25/1 WH	104246	25mm Terminal 1 Way Box White	25pcs

THROUGH BOX BLACK, WHITE



Part No.	A-Code	Description	Pk Qty
CB 20/2 BK	104252	20mm Through 2 Way Box Black	25pcs
CB 20/2 WH	104242	20mm Through 2 Way Box Black	25pcs
CB 25/2 BK	104257	25mm Through 2 Way Box Black	25pcs
CB 25/2 WH	104247	25mm Through 2 Way Box White	25pcs

ANGLE, BLACK, WHITE



Part No.	A-Code	Description	Pk Qty
CB 20/A BK	104253	20mm Angle Black	25pcs
CB 20/A WH	104243	20mm Angle White	25pcs
CB 25/A BK	104258	25mm Angle Black	25pcs
CB 25/A WH	104248	25mm Angle White	25pcs

TEE 3 WAY BOX BLACK, WHITE



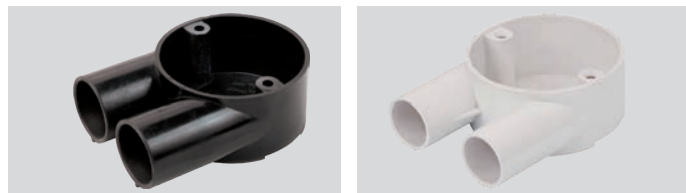
Part No.	A-Code	Description	Pk Qty
CB 20/3 BK	104254	20mm Tee 3 Way Black	25pcs
CB 20/3 WH	104244	20mm Tee 3 Way White	25pcs
CB 25/3 BK	104259	25mm Tee 3 Way Black	20pcs
CB 25/3 WH	104249	25mm Tee 3 Way White	20pcs

INTERSECTION 4 WAY, BLACK, WHITE



Part No.	A-Code	Description	Pk Qty
CB 20/4 BK	104255	20mm Intersection 4 Way Black	20pcs
CB 20/4 WH	104245	20mm Intersection 4 Way White	20pcs
CB 25/4 WH	104250	25mm Intersection 4 Way White	10pcs
CB 25/4 BK	104260	25mm Intersection 4 Way Black	10pcs

BRANCH 2 WAY, BLACK, WHITE - U BOX



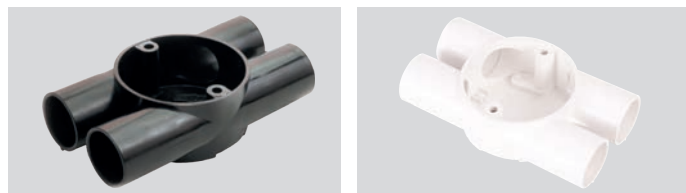
Part No.	A-Code	Description	Pk Qty
CB 20/2-U BK	9048	20mm Branch 2 Way Black	20pcs
CB 20/2-U WH	9373	20mm Branch 2 Way White	20pcs
CB 25/2-U BK	9050	25mm Branch 2 Way Black	20pcs
CB 25/2-U WH	9375	25mm Branch 2 Way White	20pcs

BRANCH 3 WAY, BLACK, WHITE - Y BOX



Part No.	A-Code	Description	Pk Qty
CB 20/3-Y BK	9052	20mm Branch 3 Way Black	20pcs
CB 20/3-Y WH	9377	20mm Branch 3 Way White	20pcs
CB 25/3-Y BK	9054	25mm Branch 3 Way Black	20pcs
CB 25/3-Y WH	9379	25mm Branch 3 Way White	20pcs

TWIN THROUGH WAY, BLACK, WHITE



Part No.	A-Code	Description	Pk Qty
CB 20/4-H BK	9056	20mm Twin Through Way Black	20pcs
CB 20/4-H WH	9381	20mm Twin Through Way White	20pcs
CB 25/4-H BK	9058	25mm Twin Through Way Black	20pcs
CB 25/4-H WH	9383	25mm Twin Through Way White	20pcs



LOOP IN BOX 4 HOLE BLACK

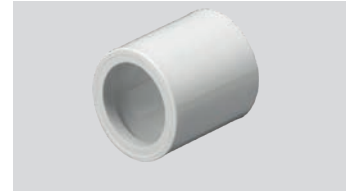


LOOP IN BOX 4 HOLE WHITE



Part No.	A-Code	Description	Pk Qty
LIB 20/4W	9311	20mm Loop in Box 4 Hole White	25pcs
LIB 20/4B	8978	20mm Loop in Box 4 Hole Black	25pcs

REDUCER WHITE, BLACK



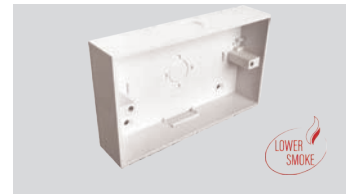
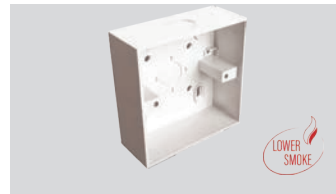
Part No.	A-Code	Description	Pk Qty
R 25x20 WH	9321	25mm - 20mm Reducer White	50pcs
R 25x20 BK	8992	25mm - 20mm Reducer Black	50pcs

CIRCULAR LIDS (LIP) BLACK /WHITE



Part No.	A-Code	Description	Pk Qty
CBL 16-25 BK	8980	16-25mm Circular Lids Black	100pcs
CBL 16-25 WH	9314	16-25mm Circular Lids White	100pcs
CPL 16-25 WH	35474	16-25mm Circular Lids with Lip White	100pcs
CPL 16-25 BK	35473	16-25mm Circular Lids with Lip Black	100pcs

SURFACE BOXES



Part No.	A-Code	Description	Pk Qty
SHB 20/1 WH	25524	87x87x35 Surface Box	15pcs
SHB 20/2 WH	34347	87x147x32 Surface Box	10pcs

CONDUIT BENDING BLOCK



Part No.	A-Code	Description	Pk Qty
GP 23-36	938	Conduit Bending Block	1pc

MALE BUSH SCREWED BLACK



MALE BUSH SCREWED WHITE



Part No.	A-Code	Description	Pk Qty
MBS 20 BK	9080	20mm Male Bush Screwed Black	200pcs
MBS 20 WH	10190	20mm Male Bush Screwed White	200pcs
MBS 25 BK	9081	25mm Male Bush Screwed Black	100pcs
MBS 25 WH	10191	25mm Male Bush Screwed White	100pcs

BENDING SPRING H/G

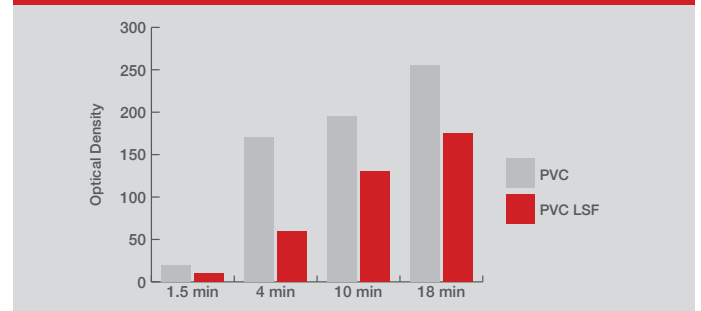


BENDING SPRING L/G



Part No.	A-Code	Description	Pk Qty
BSL 20	9135	20mm Bending Spring L/G	1pc
BSL 25	9136	25mm Bending Spring L/G	1pc
BS 20-LSF	8912	20mm Bending Spring H/G - LSF	1pc
BS25-LSF	8913	25mm Bending Spring H/G - LSF	1pc

Smoke Release - Standard PVC vs PVC/LSF*



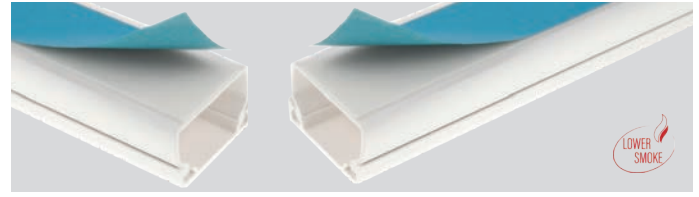
* All figures refer to standardised test samples and are given to our best knowledge but without further commitment. It is Univolt's belief that information set forth in this Data Sheet is accurate, Univolt makes no warranty, expressed or implied, with respect thereto and disclaims any liability from reliance thereon. All data are subject to change without prior notice.

MINI TRUNKING



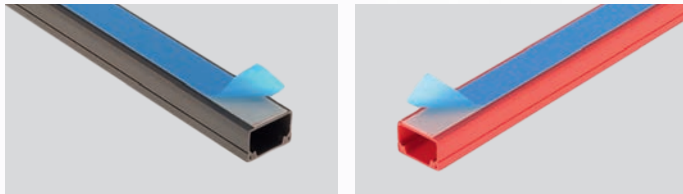
Part No.	A-Code	Description	Pk Qty
MIK 10/16	106601	10x16 Mini Trunking 3m	60m
MIK 16/16	106602	16/16 Mini Trunking 3m	60m
MIK 16/25	106603	16/25 Mini Trunking 3m	60m
MIK 16/40	106604	16/40 Mini Trunking 3m	60m
MIK 25/40	106605	25/40 Mini Trunking 3m	30m
MIK 25/40/2	106606	25/40 Mini Trunking 2 Comp, 3m	30m
MIK 40/40	106607	40/40 Mini Trunking 3m	30m
MIK 40/60	106608	40/60 Mini Trunking 3m	30m

SELF ADHESIVE MINI TRUNKING



Part No.	A-Code	Description	Pk Qty
MIKA 0	106609	10/16 Self Adhesive Mini Trunking 3m	60m
MIKA 1	106610	16/16 Self Adhesive Mini Trunking 3m	60m
MIKA 2	106611	16/25 Self Adhesive Mini Trunking 3m Now in PVC/LSF	60m
MIKA 3	106612	16/40 Self Adhesive Mini Trunking 3m	60m
MIKA 4	106613	25/40 Self Adhesive Mini Trunking 3m Now in PVC/LSF	30m
MIKA 5	106614	40/40 Self Adhesive Mini Trunking 3m	30m

COLOURED TRUNKING



Part No.	A-Code	Description	Pk Qty
MIK 16/25 RED	26687	16/25 Mini Trunking RED PVC 3m	60m
MIKA 2 RED	97780	16/25 Self Adhesive Mini Trunking RED PVC 3m	60m
MIK 16/25 BROWN	98020	16/25 Mini Trunking BROWN PVC 3m	60m
MIKA 2 BROWN	98019	16/25 Self Adhesive Mini Trunking BROWN PVC 3m	60m

FIRE PERFORMANCE CLIP



Part No.	A-Code	Description	Pk Qty
FPC 16/25	101555	Fire Performance Clip for 16/25 Trunking	50pcs

BIRMINGHAM CITY COUNCIL

PROJECT: BIRMINGHAM CITY COUNCIL
CLIENT: MIDWEST ELECTRICAL SERVICES
PRODUCT: MINI TRUNKING

Univolt continues to supply cable management solutions to contractor Midwest Electrical Services as part of their ongoing residential refurbishment work for Birmingham City Council.

Univolt standard Mini Trunking and accessories installed

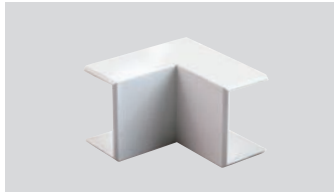
Pre-Punched Fixing Points for ease of Installation and timesaving

Impact Resistant

Univolt trunking is being regularly specified throughout a residential setting, particularly in a multi-storey environment



INTERNAL ANGLE

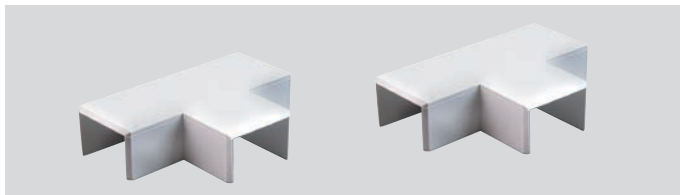


EXTERNAL ANGLE



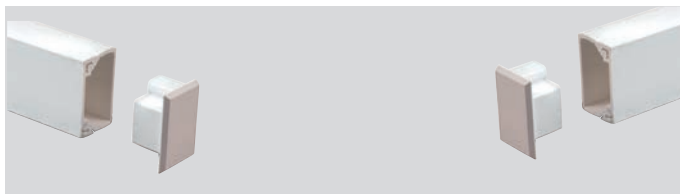
Part No.	A-Code	Description	Pk Qty
SIE 16/16	4966	16/16 Internal Angles	20pcs
SIE 16/25	4967	16/25 Internal Angles	10pcs
SIE 16/40	4969	16/40 Internal Angles	10pcs
SIE 25/40	4970	25/40 Internal Angles	10pcs
SIE 40/40	23005	40/40 Internal Angles	10pcs
SIE 40/60	23613	40/60 Internal Angles	1pc
SAE 16/16	4961	16/16 External Angles	20pcs
SAE 16/25	4964	16/25 External Angles	10pcs
SAE 16/40	4962	16/40 External Angles	10pcs
SAE 25/40	4963	25/40 External Angles	10pcs
SAE 40/40	23004	40/40 External Angles	10pcs
SAE 40/60	23614	40/60 External Angles	1pc

TEE



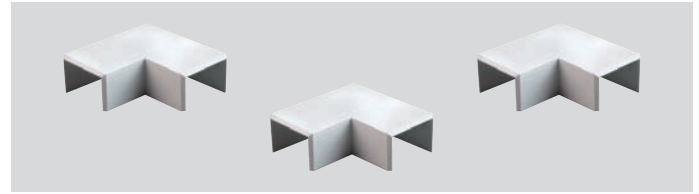
Part No.	A-Code	Description	Pk Qty
ST 16/16	4971	16/16 Tee	10pcs
ST 16/25	4974	16/25 Tee	10pcs
ST 16/40	4972	16/40 Tee	20pcs
ST 25/40	4973	25/40 Tee	5pcs
ST 40/40	23006	40/40 Tee	5pcs
ST 40/60	23611	40/60 Tee	1pc

STOP ENDS



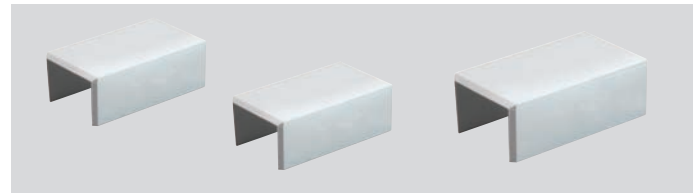
Part No.	A-Code	Description	Pk Qty
SE 16/16	4977	16/16 Stop Ends	50pcs
SE 16/25	4978	16/25 Stop Ends	50pcs
SE 16/40	4979	16/40 Stop Ends	20pcs
SE 25/40	4980	25/40 Stop Ends	20pcs
SE 40/40	4981	40/40 Stop Ends	20pcs
SE 40/60	25613	40/60 Stop Ends	10pcs

FLAT ANGLE



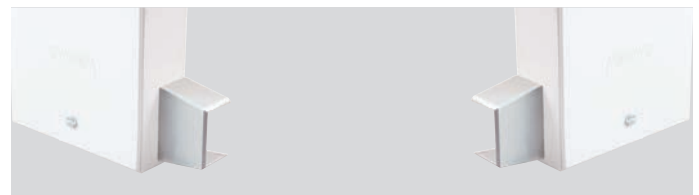
Part No.	A-Code	Description	Pk Qty
SFW 16/16	4956	16/16 Flat Angles	20pcs
SFW 16/25	4957	16/25 Flat Angles	10pcs
SFW 16/40	4958	16/40 Flat Angles	10pcs
SFW 25/40	4959	25/40 Flat Angles	10pcs
SFW 40/40	23003	40/40 Flat Angles	5pcs
SFW 40/60	23612	40/60 Flat Angles	1pc

COUPLERS



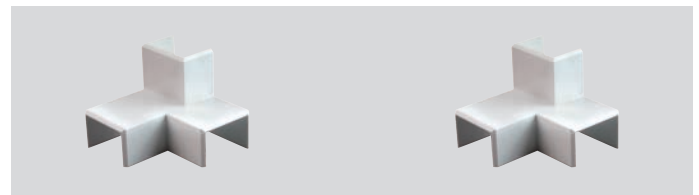
Part No.	A-Code	Description	Pk Qty
SK 16/16	4951	16/16 Couplers	20pcs
SK 16/25	4952	16/25 Couplers	20pcs
SK 16/40	4953	16/40 Couplers	20pcs
SK 25/40	4954	25/40 Couplers	20pcs
SK 40/40	4955	40/40 Couplers	10pcs
SK 40/60	25614	40/60 Couplers	5pcs

TRUNKING ADAPTER



Part No.	A-Code	Description	Pk Qty
SKE 16/16	4986	16x16 Trunking Adaptor	1pc
SKE 16/25	4987	16x25 Trunking Adaptor	1pc

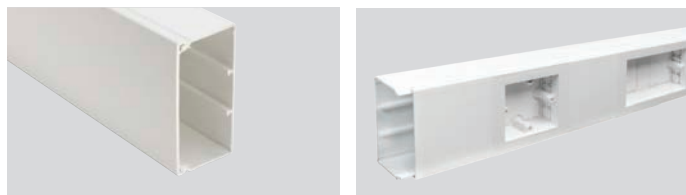
INTERSECTIONS



Part No.	A-Code	Description	Pk Qty
SWAL 16/25	4982	16/25 Left Intersection	50pcs
SWAR 16/25	4983	16/25 Right Intersection	50pcs
SA 16/25	4984	16/25 Side Tee	50pcs

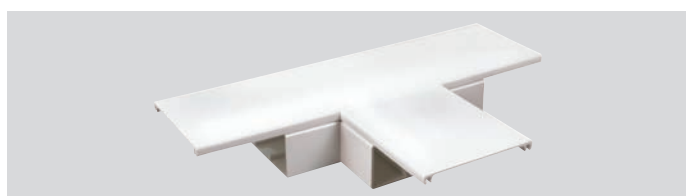
MAXI TRUNKING

TRUNKING



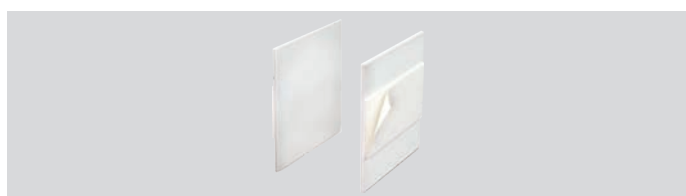
Part No.	A-Code	Description	Pk Qty
MAK 50/50	36996	50/50 Maxi Trunking	12m
MAK 50/75	19007	50/75 Maxi Trunking	12m
MAK 50/100	36997	50/100 Maxi Trunking	12m
MAK 50/150	22788	50/150 Maxi Trunking	6m
MAK 75/75	19008	75/75 Maxi Trunking	12m
MAK 75/100	19010	75/100 Maxi Trunking	6m
MAK 75/150	22953	75/150 Maxi Trunking	6m
MAK 100/100	19011	100/100 Maxi Trunking	6m
MAK 100/150	22789	100/150 Maxi Trunking	3m
MAK 150/150	22790	150/150 Maxi Trunking	3m

FLAT TEE



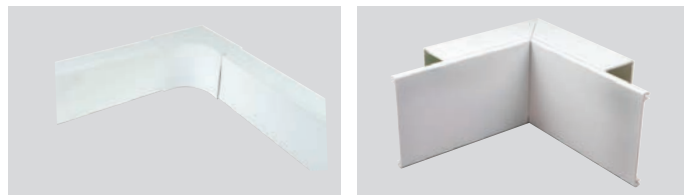
Part No.	A-Code	Description	Pk Qty
MFT 50/50	19274	50x50 Flat Tee	1pc
MFT 50/75	19275	50x75 Flat Tee	1pc
MFT 50/100	19276	50x100 Flat Tee	1pc
MFT 50/150	22970	50x150 Flat Tee	1pc
MFT 75/75	19277	75x75 Flat Tee	1pc
MFT 75/100	19278	75x100 Flat Tee	1pc
MFT 75/150	22971	75x150 Flat Tee	1pc
MFT 100/100	19279	100x100 Flat Tee	1pc
MFT 100/150	22972	100x150 Flat Tee	1pc
MFT 150/150	22973	150x150 Flat Tee	1pc

INTERNAL COUPLER



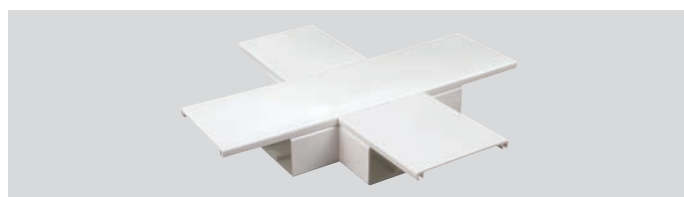
Part No.	A-Code	Description	Pk Qty
MIC 50	37544	50mm Internal Coupler	1pc
MIC 75	37545	75mm Internal Coupler	1pc
MIC 100	37543	100mm Internal Coupler	1pc
MIC 150	37542	150mm Internal Coupler	1pc

INTERNAL ANGLES



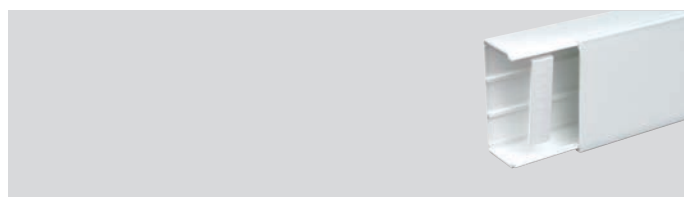
Part No.	A-Code	Description	Pk Qty
MIE 50/50	19250	50x50 Internal Angles	1pc
MIES 50/50	85632	50x50 Internal Angles - INJECTION MOULDED	1pc
MIE 50/75	19251	50x75 Internal Angles	1pc
MIE 50/100	19252	50x100 Internal Angles	1pc
MIES 50/100	86043	50x100 Internal Angles - INJECTION MOULDED	1pc
MIE 50/150	22958	50x150 Internal Angles	1pc
MIE 75/75	19253	75x75 Internal Angles	1pc
MIE 75/100	19254	75x100 Internal Angles	1pc
MIE 75/150	22959	75x150 Internal Angles	1pc
MIE 100/100	19255	100x100 Internal Angles	1pc
MIE 100/150	22960	100x150 Internal Angles	1pc
MIE 150/150	22961	150x150 Internal Angles	1pc

CROSS PIECE



Part No.	A-Code	Description	Pk Qty
MCP 50/50	25885	50x50 Cross Piece	1pc
MCP 50/100	25887	50x100 Cross Piece	1pc
MCP 50/150	25888	50x150 Cross Piece	1pc
MCP 75/75	25889	75x75 Cross Piece	1pc
MCP 75/100	25890	75x100 Cross Piece	1pc
MCP 75/150	25891	75x150 Cross Piece	1pc
MCP 100/100	25892	100x100 Cross Piece	1pc
MCP 100/150	25893	100x150 Cross Piece	1pc
MCP 150/150	25215	150x150 Cross Piece	1pc

CABLE RETAINER



Part No.	A-Code	Description	Pk Qty
MHK 50	19329	50mm Cable Retainer	1pc
MHK 75	19330	75mm Cable Retainer	1pc
MHK 100	19331	100mm Cable Retainer	1pc



EXTERNAL ANGLES



Part No.	A-Code	Description	Pk Qty
MAE 50/50	19262	50x50 External Angle	1pc
MAES 50/50	85634	50x50 External Angle - INJECTION MOULDED	1pc
MAE 50/75	19263	50x75 External Angle	1pc
MAE 50/100	19264	50x100 External Angle	1pc
MAES 50/100	86042	50x100 External Angle - INJECTION MOULDED	1pc
MAE 50/150	22962	50x150 External Angle	1pc
MAE 75/75	19265	75x75 External Angle	1pc
MAE 75/100	19266	75x100 External Angle	1pc
MAE 75/150	22963	75x150 External Angle	1pc
MAE 100/100	19267	100x100 External Angle	1pc
MAE 100/150	22964	100x150 External Angle	1pc
MAE 150/150	22965	150x150 External Angle	1pc

STOP END



Part No.	A-Code	Description	Pk Qty
ME 50/50	19308	50x50 Stop End	1pc
ME 50/75	19309	50x75 Stop End	1pc
ME 50/100	19310	50x100 Stop End	1pc
ME 50/150	22163	50x150 Stop End	1pc
ME 75/75	19311	75x75 Stop End	1pc
ME 75/100	19312	75x100 Stop End	1pc
ME 75/150	22165	75x150 Stop End	1pc
ME 100/100	19313	100x100 Stop End	1pc
ME 100/150	22167	100x150 Stop End	1pc
ME 150/150	22169	150x150 Stop End	1pc

SINGLE SOCKET

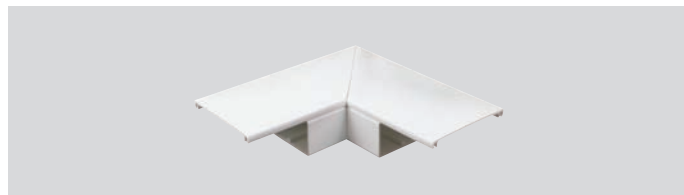


TWIN SOCKET



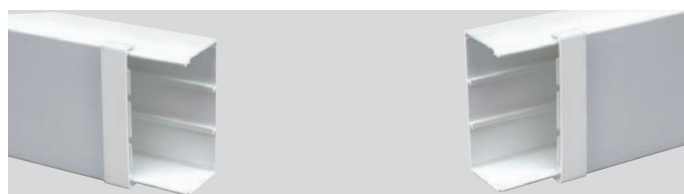
Part No.	A-Code	Description	Pk Qty
MIB60/100 Single	23230	Single Socket Box 80x100x28mm	1pc
MIB120/100 Twin	23232	Twin Socket Box 140x100x28mm	1pc
MIB60/150 Single	23231	Single Socket Box 80x150x28mm	1pc
MIB120/150 Twin	23233	Twin Socket Box 140x150x28mm	1pc

FLAT ANGLE



Part No.	A-Code	Description	Pk Qty
MFW50/50	19286	50x50 Flat Angle	1pc
MFW50/75	19287	50x75 Flat Angle	1pc
MFW50/100	19288	50x100 Flat Angle	1pc
MFW50/150	22966	50x150 Flat Angle	1pc
MFW75/75	19289	75x75 Flat Angle	1pc
MFW75/100	19290	75x100 Flat Angle	1pc
MFW75/150	22967	75x150 Flat Angle	1pc
MFW100/100	19291	100x100 Flat Angle	1pc
MFW100/150	22968	100x150 Flat Angle	1pc
MFW150/150	22969	150x150 Flat Angle	1pc

COVER JOINT



Part No.	A-Code	Description	Pk Qty
MK50WS	19317	50mm Cover Joint	1pc
MK75WS	19318	75mm Cover Joint	1pc
MK100WS	19319	100mm Cover Joint	1pc
MK150WS	25055	150mm Cover Joint	1pc

TRUNKING DIVIDER



Part No.	A-Code	Description	Pk Qty
MTW 50	19717	50mm Trunking Divider	3m
MTW 75	19718	75mm Trunking Divider	3m
MTW 100	19719	100mm Trunking Divider	3m



MAK50/100 can be installed as a dado trunking for both power and data cables

MAK50/100 is compatible with MIB60/100 Single Backbox and MIB120/100 Twin Backbox.

STARLINE TRUNKING

TRUNKING 50 X 170



Part No.	A-Code	Description	Pk Qty
SLC 50/170	82756	Dado Trunking Chamfered	3m
SLQ 50/170	82754	Dado Trunking Square	3m
SLS 50/170	82755	Skirting Trunking	3m

Part No.	A-Code	Description	Pk Qty
SLC 50/250	86047	Dado Chamfered Trunking	3m
SLQ 50/250	86048	Dado Square Trunking	3m
SLS 50/250	86045	Skirting Trunking	3m
SLC 42/50	81971	Chamfered Lid Only (4x3m)	12m
SLQ 42/50	81972	Square Lid Only (4x3m)	12m

INTERNAL ANGLE & FABRICATED BENDS



EXTERNAL ANGLES AND BENDS



Part No.	A-Code	Description	Pk Qty
SIE 50/170	36057	Internal Angle Skirting	1pc
CIE 50/170	36066	Internal Angle Dado Chamfered	1pc
QIE 50/170	36070	Internal Angle Dado Square	1pc

Part No.	A-Code	Description	Pk Qty
SAE 50/170	36058	External Bend Skirting	1pc
CAE 50/170	36067	External Bend Dado Chamfered	1pc
QAE 50/170	36071	External Angles Dado Square	1pc

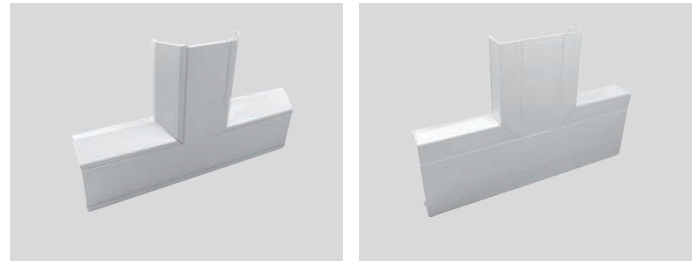


FLAT ANGLES



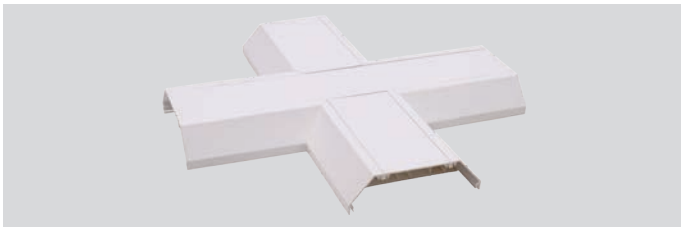
Part No.	A-Code	Description	Pk Qty
CFW 50/170	36729	Flat Angles Dado Chamfered	1pc
QFW 50/170	36898	Flat Angles Dado Square	1pc
SFWU 50/170	36730	Flat Bend Upward Skirting	1pc
SFWD 50/170	36731	Flat Bend Downward Skirting	1pc

FLAT TEES



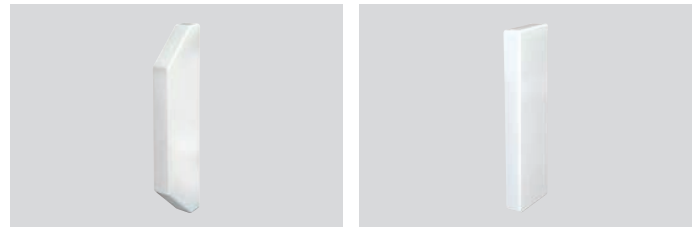
Part No.	A-Code	Description	Pk Qty
CFT 50/170	36783	Flat Tees Dado Chamfered	1pc
QFT 50/170	36784	Flat Tees Dado Square	1pc
SFTU 50/170	36781	Flat Tee Upward Skirting	1pc
SFTD 50/170	36782	Flat Tee Downward Skirting	1pc

4 WAY INTERSECTION



Part No.	A-Code	Description	Pk Qty
CFX 50/170	82392	4 Way Intersection Chamfered	1pc
QFX 50/170	84414	4 Way Intersection Square	1pc

END CAPS AND STOPS



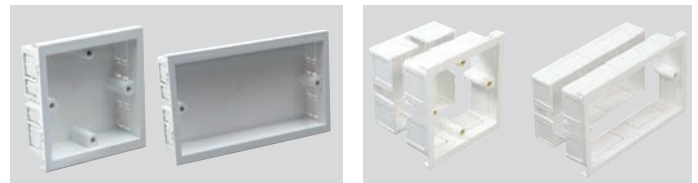
Part No.	A-Code	Description	Pk Qty
CE 50/170	36069	End Cap Dado Chamfered	1pc
QE 50/170	36073	End Cap Dado Square	1pc
SEL 50/170	36060	Left Hand End Cap Skirting	1pc
SER 50/170	36061	Right Hand End Cap Skirting	1pc

COUPLERS



Part No.	A-Code	Description	Pk Qty
SK 50/170	36059	Coupler Skirting	1pc
CK 50/170	36068	Coupler Dado Chamfered	1pc
QK 50/170	36072	Coupler Dado Square	1pc

BACK BOXES



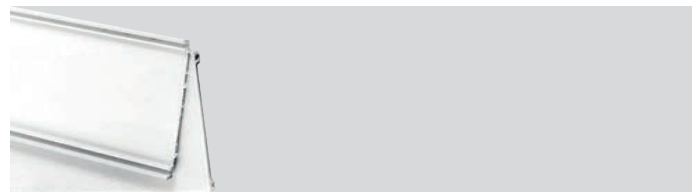
Part No.	A-Code	Description	Pk Qty
SLB 1	36075	Fixed Single Socket Box	1pc
SLB 2	36076	Fixed Twin Socket Box	1pc
SLB1-A	104560	Adjustable Single box 30mm-50mm	1pc
SLB2-A	104561	Adjustable Twin box 30mm-50mm	1pc

HOUSING UNIT



Part No.	A-Code	Description	Pk Qty
MRE 50/170	40212	MCB/RCD Housing Unit - Complete with Din Mounting Rail	1pc

LIDS



Part No.	A-Code	Description	Pk Qty
SLC 42/50	81971	Chamfered Lid Only (4x3m)	12m
SLQ 42/50	81972	Square Lid Only (4x3m)	12m
SL 80	82106	Centre Lid Only (2x3m)	6m

NEW STARLINE SLXL PVC LSF - 3 COMP DADO

Univolt is proud to introduce and launch the latest 3 compartment curved Dado trunking into the market. The new Starline – SLXL PVC LSF has been designed for use in both power and the latest structured cabling including CAT5e, CAT6, CAT6A, CAT7, OM3 Fibre and the new CAT8 high density data solution.

At 210mm x 65mm, the SLXL PVC LSF is one of the largest 3 compartment Dado on the market, allowing for extra data capacity where a considerable amount of data is required, and was designed for various market sectors including; education, health, MOD and data centres as well as commercial and industrial applications.

Univolt SLXL PVC LSF achieves DDA compliance (Disability Discrimination Act 2005), through the use of a light grey coloured center lid.

The high impact resistance uPVC assures the trunking is both sturdy and robust, whilst providing an aesthetically pure white finish.

KEY DESIGN FEATURES

Size 210mm x 65mm (allowing for greater data capacity).

SLXL PVC - LSF (Lower smoke and fume) Reduces smoke release by up to 65% in the first 4 minutes of a fire

Will accept the latest structured cabling solutions – CAT5e, CAT6, CAT6A, CAT7, CAT8 and OM3 Fibre.

New adjustable back box (30mm – 50mm), for deeper RJ45 outlets.

Adjustable Internal and External bends +/- 5 degrees, for non-standard 90 degree walls.

Moulded internal, external, flat angle and flat Tee offer a minimum bend radius of 70mm (meeting and exceeding British, European and International standards).

Integral built in couplers on the flat angle and flat tee, negating the use for extra joint covers.

Steel screen divider for power and data separation (BS50174-2).

DDA compliance with light grey center lid.



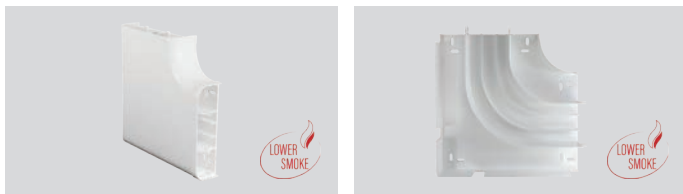


SLXL 65 X 210



Part No.	A-Code	Description	Pk Qty
SLXL65/210 LSF	104553	210x65 lower Smoke curved 3 comp dado Cat5e/6/6A/7/8 & OM3 Fibre	3m
SLXL65/210 LSF-LGL	106745	210x65 lower Smoke curved 3 comp dado -Light Grey center Lid for DDA compliance	3m

FLAT ANGLE



Part No.	A-Code	Description	Pk Qty
SLFA LSF	104557	Flat Angle -lower smoke	1pc

COUPLERS



Part No.	A-Code	Description	Pk Qty
SLC LSF	104554	Joint Cover-lower smoke	1pc
SLE LSF	104555	End Cap- lower smoke	1pc

END CAPS



SLXL ADJUSTABLE BACK BOXES 1G / 2G



Part No.	A-Code	Description	Pk Qty
SLB1-A LSF	104560	Single Adjustable box 30mm-50mm-lower smoke	1pc
SLB2-A LSF	104561	Twin Adjustable box 30mm-50mm-lower smoke	1pc

INTERNAL ANGLE



Part No.	A-Code	Description	Pk Qty
SLIA LSF	104556	Internal Adjustable Angle-lower smoke	1pc
SLOA LSF	104559	External Adjustable Angle-lower smoke	1pc

EXTERNAL ANGLE



FLAT TEE



Part No.	A-Code	Description	Pk Qty
SLFT LSF	104562	Flat Tee SLXL	1pc

CONDUIT/MINI ADAPTOR



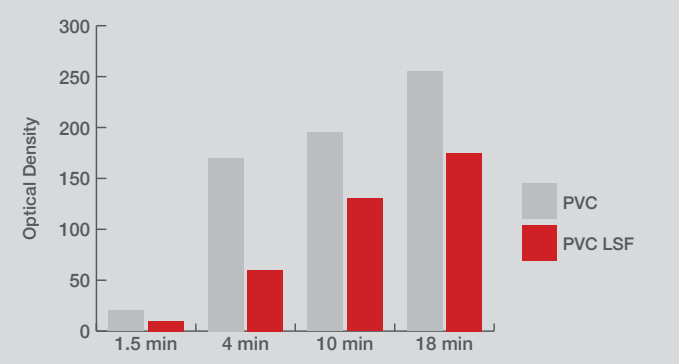
Part No.	A-Code	Description	Pk Qty
SLA LSF	104558	Conduit/Mini Adaptor- lower smoke	1pc

CABLE RETAINER



Part No.	A-Code	Description	Pk Qty
SLCR LSF	104563	Cable Retainer lower smoke	1pc

Smoke Release - Standard PVC vs PVC/LSF*



* All figures refer to standardised test samples and are given to our best knowledge but without further commitment. It is Univolt's belief that information set forth in this Data Sheet is accurate, Univolt makes no warranty, expressed or implied, with respect thereto and disclaims any liability from reliance thereon. All data are subject to change without prior notice.

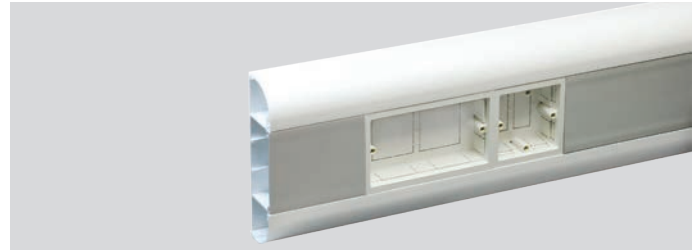
NEW STARLINE SLR 3 COMP CURVED TRUNKING

Univolt's SLR - 3 compartment dado trunking is ideal for both power and data cabling and designed to suit any application. At 170mmx50mm the new curved profile offers greater data capacity, for the latest structured cabling* as well as DDA compliance with a light grey centre lid.

TRUNKING 50 X 170



Part No.	A-Code	Description	Pk Qty
SLR 50/170	101124	Dado Trunking Curved Profile	3m



Part No.	A-Code	Description	Pk Qty
SLR 50/170LG	105311	Dado Trunking Curved Profile c/w Light Grey Lid to meet DDA compliance	3m

INTERNAL ANGLE & FABRICATED BENDS



Part No.	A-Code	Description	Pk Qty
RIE 50/170	103178	Internal Angle Dado Rounded *	1pc

EXTERNAL ANGLES AND BENDS



Part No.	A-Code	Description	Pk Qty
RAE 50/170	103179	External Angle Rounded *	1pc

COUPLERS



Part No.	A-Code	Description	Pk Qty
RK 50/170	101590	Coupler Dado Rounded	1pc

END CAPS AND STOPS



Part No.	A-Code	Description	Pk Qty
RE 50/170	101120	End Cap Dado Rounded	1pc

FLAT ANGLES



Part No.	A-Code	Description	Pk Qty
RFW 50/170	101122	Flat Angle Dado Rounded *	1pc

FLAT TEES



Part No.	A-Code	Description	Pk Qty
RFT 50/170	101121	Flat Tee Dado Rounded *	1pc

* Bend radius in accordance with the structure cabling manufacturer of 4x diameter of cable.

ADJUSTABLE BACK BOXES 1G / 2G



Part No.	A-Code	Description	Pk Qty
SLB1-A	104560	Single Adjustable Back Box 30mm-50mm	1pc
SLB2-A	104561	Twin Adjustable Back Box 30mm-50mm	1pc



OVAL CONDUIT



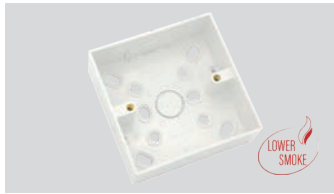
Part No.	A-Code	Description	Pk Qty
UFR 16	2383	16mm Oval Conduit White	150m
UFR 20	103720	20mm Oval Conduit White	150m
UFR 25	103721	25mm Oval Conduit White	150m

CHANNELLING

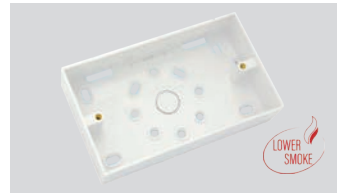


Part No.	A-Code	Description	Pk Qty
CHA 1	86076	12mm Channelling White (150m Bundle)	150m
CHA 2	86077	25mm Channelling White (150m Bundle)	150m
CHA 3	86078	38mm Channelling White (150m Bundle)	150m

SINGLE SURFACE BOX ROUND CORNERED



TWIN SURFACE BOX ROUND CORNERED



Part No.	A-Code	Description	Pk Qty
SFB 1	103220	Single 32mm Surface Box Square Corner 1xMT K.O & 1x Conduit K.O	10pcs
SFB 2	103222	Twin 32mm Surface Box Square Corner 1xMT K.O & 1x Conduit K.O	10pcs
SFB 1/44	103224	Single 44mm Surface Box Square Corner 1xMT K.O & 1x Conduit K.O	10pcs
SFB 2/44	103226	Twin 44mm Surface Box Square Corner 1xMT K.O & 1x Conduit K.O	10pcs
SFR 1	103221	Single 32mm Surface Box Round Corner 1xMT K.O & 1x Conduit K.O	10pcs
SFR2	103223	Twin 32mm Surface Box Round Corner 1xMT K.O & 1x Conduit K.O	10pcs
SFR1/44	103225	Single 44mm Surface Box Round Corner 1xMT K.O & 1x Conduit K.O	10pcs
SFR2/44	103227	Twin 44mm Surface Box Round Corner 1xMT K.O & 1x Conduit K.O	10pcs

SINGLE SURFACE BOX



TWIN SURFACE BOX



Part No.	A-Code	Description	Pk Qty
MAK 85/85x25/3	41618	Single 25mm Surface Box 3 Mini Trunking K.O	1pc
MAK 85/85x25/4	41361	Single 25mm Surface Box 4 Mini Trunking K.O	1pc
MAK 85/150x32/1	41362	Twin 32mm Surface Box 1 Mini Trunking K.O	1pc
MAK 85/150x32/3	41353	Twin 32mm Surface Box 3 Mini Trunking K.O	1pc

SURFACE BOXES



Part No.	A-Code	Description	Pk Qty
SHB 20/10 PWH	101511	Plain Sided Surface Box	15pcs
SHB 20/20 PWH	101512	1 x Conduit K.O Surface Box	20pcs
SHB 20/1 WH	25524	87x87x35 Surface Box	15pcs
SHB 20/2 WH	34347	87x147x32 Surface Box	10pcs

TRUNKING ADAPTER



Part No.	A-Code	Description	Pk Qty
SKE 16/16	4986	16x16 Trunking Adaptor	1pc
SKE 16/25	4987	16x25 Trunking Adaptor	1pc

CEILING ROSE ADAPTOR



Part No.	A-Code	Description	Pk Qty
CRA 1	57024	Ceiling Rose Adaptor M4 thread	20pcs

PVC BENCH TRUNKING

BENCH TRUNKING



Part No.	A-Code	Description	Pk Qty
BT*	104066	100mm x 100mm PVC Bench Trunking c/w White Lid - 3m Length	3m
BT-LGL*	-	100mm x 100mm PVC Bench Trunking c/w Light Grey Centre Lid - 3m Length	3m

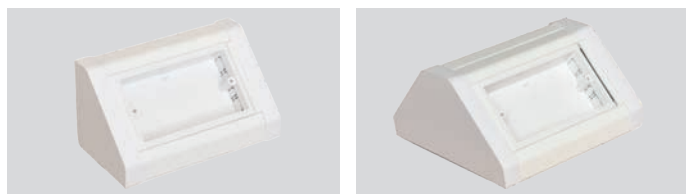
* Only available to use with SLB1-A and SLB2-A

1 GANG BENCH BOX SINGLE SIDED / DOUBLE SIDED



Part No.	A-Code	Description	Pk Qty
BT-1G	104071	1 Gang Bench Box	1pc
BT-1GD	104072	1 Gang Bench Box Double Sided	1pc

2 GANG BENCH BOX SINGLE SIDED / DOUBLE SIDED



Part No.	A-Code	Description	Pk Qty
BT-2G	104073	2 Gang Bench Box	1pc
BT-2GD	104074	2 Gang Bench Box Double Sided	1pc

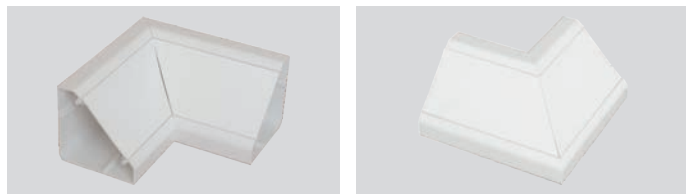
3 GANG BENCH BOX SINGLE SIDED / DOUBLE SIDED



Part No.	A-Code	Description	Pk Qty
BT1+2G	104075	3 Gang Bench Box	1pc
BT1+2GD	104076	3 Gang Bench Box Double Sided	1pc

INTERNAL ANGLE

EXTERNAL ANGLE



Part No.	A-Code	Description	Pk Qty
BT1-IB	104077	Internal Angle	1pc
BT-EB	104078	External Angle	1pc

COUPLER



Part No.	A-Code	Description	Pk Qty
BT/BC	104070	Coupler	1pc

END CAP

DOUBLE END CAP



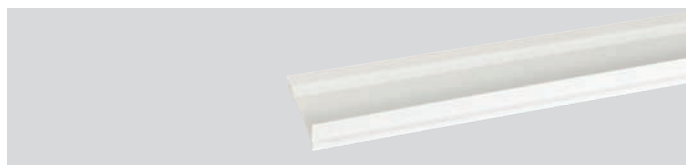
Part No.	A-Code	Description	Pk Qty
BT/BES	104068	End Cap	1pc
BT/BED	104069	Double End Cap	1pc

ADJUSTABLE BACK BOXES 1G / 2G



Part No.	A-Code	Description	Pk Qty
SLB1-A	104560	Single Adjustable Back Box 30mm-50mm	1pc
SLB2-A	104561	Twin Adjustable Back Box 30mm-50mm	1pc

DIVIDER



Part No.	A-Code	Description	Pk Qty
MTW 50	19717	Divider	3m

Compatibility of new adjustable single and twin back boxes

Due to a redesign of Unvolt bench trunking will only accept SLB1-A and SLB2-A and will no longer accept SLB1 and SLB2.



PP2WT POWER POLE

NEW PP2WT Power Pole



Part No.	A-Code	Description	Pk Qty
PP2WT	105886	Power Pole 3.5m (Aluminum White) c/w 6x SLB1	1pc

KEY DESIGN FEATURES

New telescopic adjustable arm fixing for fast installation.

PP2WT (powder coated white) - 3.5m long, extendible up to 3.95m

More modern design

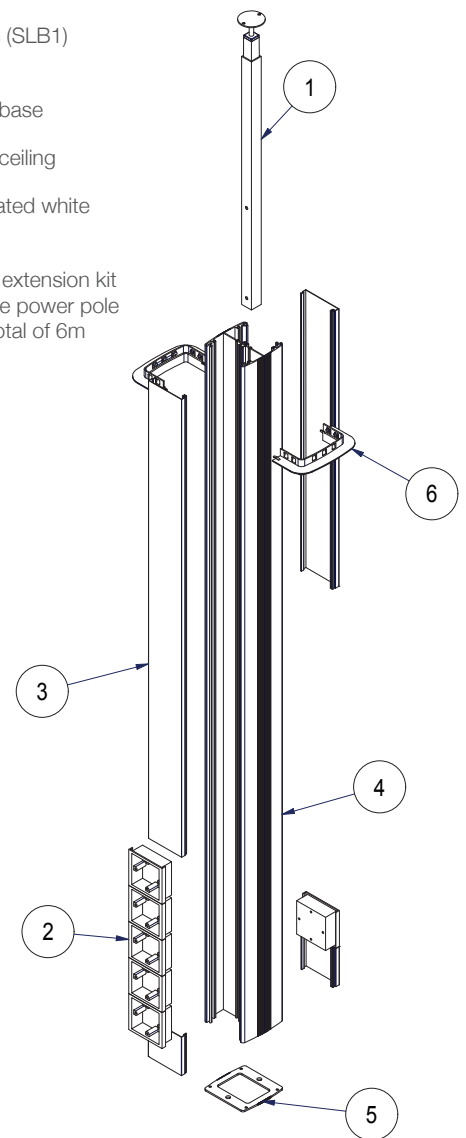
c/w 6 x 1 gang boxes (SLB1) including roof collar.

New design fixing for base

New design fixing for ceiling

Colours – Powder coated white (RAL9010).

Additional extra 2.5m extension kit (PP2EXT), enabling the power pole to be extended to a total of 6m



Item	Description
1	Adjustable Fixing Arm 100-400mm
2	Single Outlet Box
3	PVC Lid
4	Power Pole - 3.5M
5	Floor Fixing Plate
6	Ceiling Tile Collar



PP1 POWER POST



PP1 Power Post

Components

- Double-sided aluminium spine
- Top cap
- 2 trunking lids (front and back)
- 3 outlet boxes SLB 1
- Base fixing kit (with screws)

Material

Aluminium and PVC-U

Dimensions

99x104x690mm

POWER POLE AND POST ACCESSORIES



Part No.	A-Code	Description	Pk Qty
SLB 1	36075	1 Gang Box	1pc
SLB 2	36076	2 Gang Box	1pc



Part No.	A-Code	Description	Pk Qty
SL 80	82106	Spare Centre Lid	1pc
MTW50	19717	Divider	1pc

Part No.	A-Code	Description	Pk Qty
PP1 W	82244	Power Post c/w 3 SLB 1	1pc
PP2 W	82245	Power Pole c/w 6 SLB 1	1pc

CAVITY FLOOR BOXES

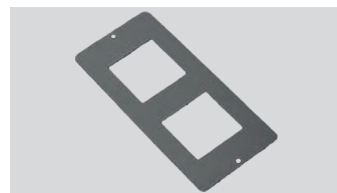


Part No.	A-Code	Description	Pk Qty
UNIFFB 3L-90	96516	3 Comp Cavity Floor Box 305x220x90mm, c/w 1xTSS0, 1xBlank, 1xRJ45	1pc
UNIEFB 3L-90	96525	3 Comp Cavity Floor Box 305x220x90mm - Empty	1pc
NEW UNIEFB 3L-75	105822	3 Comp Cavity Floor Box 305x220x75mm - Empty	1pc

BLANK PLATE



2 X EURO PLATE

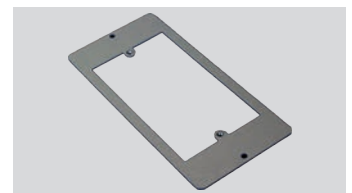


Part No.	A-Code	Description	Pk Qty
FOBP 300	96517	Blank Plate	1pc
FOBP 312	96524	2 x Euro Plate (50x50mm)	1pc

TWIN SWITCH SOCKET PLATE



TWIN SOCKET ACC PLATE

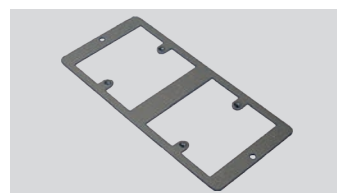


Part No.	A-Code	Description	Pk Qty
FOBP 305	96523	Twin Switch Socket Plate	1pc
FOBP 303	96520	Twin Socket Accessory Plate	1pc

ALPHA SNAP PLATE

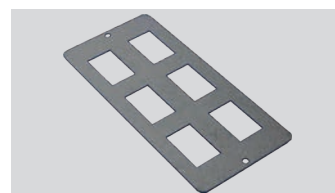


LJU 3/4/5

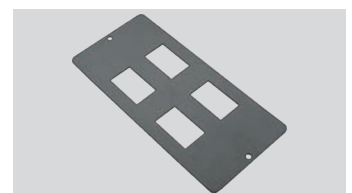


Part No.	A-Code	Description	Pk Qty
FOBP 309	96521	4 x Alpha Snap Plate (47x22mm cut out)	1pc
FOBP 310	96519	2 x LJU3/4/5 for 86x86mm Accessory Plate	1pc

6 X LJ6C PLATE



4 X LJ6C PLATE



Part No.	A-Code	Description	Pk Qty
FOBP 306	96522	6 x LJ6C Plate (37x22mm cut out)	1pc
FOBP 307	96518	4 x LJ6C Plate (37x22mm cut out)	1pc

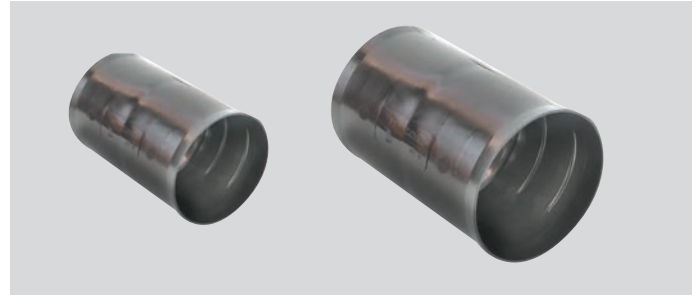
TWIN WALL DUCTING

DUCTING

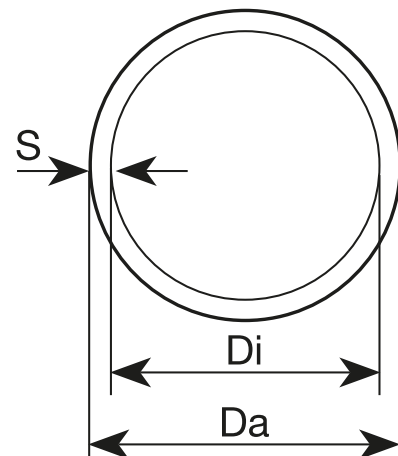
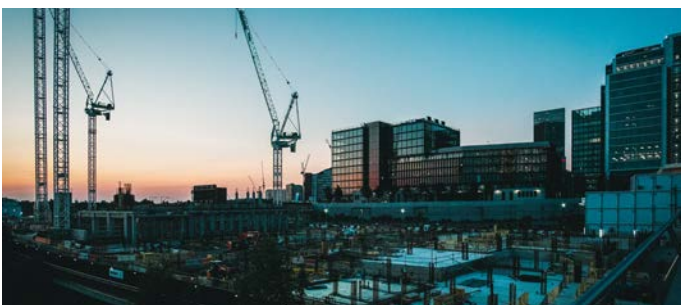


Part No.	A-Code	Description	Pk Qty
FXKVR 40	55107	40mm Twin Wall Ducting	50m
FXKVR 50	41925/99018	50mm Twin Wall Ducting	50m
FXKVR 63	32332	63mm Twin Wall Ducting	50m
FXKVR 75	26353	75mm Twin Wall Ducting	50m
FXKVR 90	41343	90mm Twin Wall Ducting	50m
FXKVR 110	41344	110mm Twin Wall Ducting	50m

DUCTING COUPLER



Part No.	A-Code	Description	Pk Qty
FXKVM 40	55202	40mm Underground Ducting Coupler	1pc
FXKVM 50	25755	50mm Underground Ducting Coupler	1pc
FXKVM 63	25756	63mm Underground Ducting Coupler	1pc
FXKVM 75	25757	75mm Underground Ducting Coupler	1pc
FXKVM 90	25758	90mm Underground Ducting Coupler	1pc
FXKVM 110	103649	110mm Underground Ducting Coupler	1pc



Nominal Size	Outer Diameter Da	Tolerance	Inner Diameter Di (minimal)
40	40.0	+0.8/-0.0	32.0
50	50.0	+1.0/-0.0	41.0
63	63.0	+1.2/-0.0	52.0
75	75.0	+1.4/-0.0	62.2
90	90.0	+1.7/-0.0	74.0
110	110.0	+2.0/-0.0	93.0



LIGHT GAUGE (320N) PVC-U



Part No.	A-Code	Description	Pk Qty
FX 16 G	19855	16mm Light Gauge Light Grey	50m
FX 20 G	19856	20mm Light Gauge Light Grey	50m
FX 25 G	19857	25mm Light Gauge Light Grey	50m
FX 32 G	19858	32mm Light Gauge Light Grey	25m
FX 40 G	19859	40mm Light Gauge Light Grey	25m

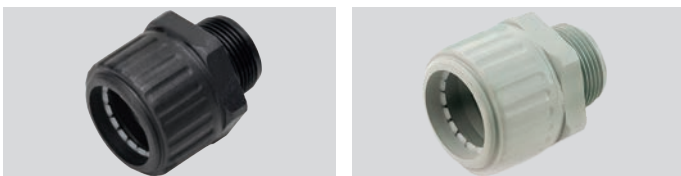
MEDIUM GAUGE TURBO (750N) PVC-U



Part No.	A-Code	Description	Pk Qty
FXP-TURBO 16 B	98772	16mm Medium Gauge Black	50m
FXP-TURBO 20 B	84057	20mm Medium Gauge Black	50m
FXP-TURBO 25 B	84058	25mm Medium Gauge Black	50m
FXP-TURBO 32 B	98773	32mm Medium Gauge Black	25m
FXP-TURBO 40 B	98774	40mm Medium Gauge Black	25m
FXP-TURBO 50 B	98775	50mm Medium Gauge Black	25m
FXP-TURBO 63 B	98776	63mm Medium Gauge Black	25m

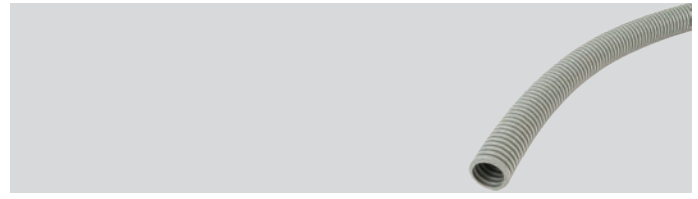
Available in grey on request

FLEXIBLE CONDUIT FITTINGS



Part No.	A-Code	Description	Pk Qty
SGL 16/16 G	12699	Glands 16mm Grey	100pcs
SGL 16/16 B	27798	Glands 16mm Black	100pcs
SGL 20/20 G	12700	Glands 20mm Grey	50pcs
SGL 20/20 B	27799	Glands 20mm Black	50pcs
SGL 25/25 G	12701	Glands 25mm Grey	50pcs
SGL 25/25 B	27800	Glands 25mm Black	50pcs
SGL 32/32 G	12702	Glands 32mm Grey	30pcs
SGL 32/32 B	27801	Glands 32mm Black	30pcs
SGL 40/40 G	15509	Glands 40mm Grey	20pcs
SGL 40/40 B	27802	Glands 40mm Black	20pcs
SGL 50/50 G	15508	Glands 50mm Grey	16pcs
SGL 50/50 B	27803	Glands 50mm Black	16pcs
SGL 63/63 G	43075	Glands 63mm Grey	6pcs
SGL 63/63 B	27804	Glands 63mm Black	6pcs

LIGHT GREY CONDUIT FLEXIBLE STABILISED SOLAR



Part No.	A-Code	Description	Pk Qty
FXPS 20 G-UV	2128682	20mm Light Grey Flexible Conduit UV Stabilised Solar	50m
FXPS 25 G-UV	2128683	25mm Light Grey Flexible Conduit UV Stabilised Solar	50m
FXPS 32 G-UV	2128684	32mm Light Grey Flexible Conduit UV Stabilised Solar	25m

FLEXIBLE CONDUIT GRIP STYLE COUPLER



Part No.	A-Code	Description	Pk Qty
KM 20 LG	83837	Conduit Grip Coupler 20mm Light Grey	100pcs
KM 20 BK	84051	Conduit Grip Coupler 20mm Black	100pcs
KM 20 O	80642	Conduit Grip Coupler 20mm Orange	100pcs
KM 25 LG	83839	Conduit Grip Coupler 25mm Light Grey	50pcs
KM 25BK	84052	Conduit Grip Coupler 25mm Black	50pcs
KM 25 O	80643	Conduit Grip Coupler 25mm Orange	50pcs
KM 32 LG	85924	Conduit Grip Coupler 32mm Light Grey	25pcs
KM 32 BK	85926	Conduit Grip Coupler 32mm Black	25pcs
KM 32 O	85925	Conduit Grip Coupler 32mm Orange	25pcs

FLEXIBLE CONDUIT CLIPS



Part No.	A-Code	Description	Pk Qty
CL 20 BK	82179	20mm Clips Black	100pcs
CL 20 LG	82178	20mm Clips Light Grey	100pcs
CL 25 BK	82216	25mm Clips Black	100pcs
CL 25 LG	82215	25mm Clips Light Grey	100pcs
CL 32 LG	82219	32mm Clips Light Grey	50pcs
CL 32 BK	82220	32mm Clips Black	50pcs

10 Year Product Warranty

Dietzel-Univolt warrants that FXPS-UV conduit will not suffer from significant mechanical deterioration from ultra violet light exposure for a period of up to 10 years from the purchase date of the product, where significant degradation of the conduits mechanical properties has been caused by ultra violet radiation Dietzel-Univolt will replace the conduit free of charge, the owner of the solar facility must be able to prove the conduit was installed correctly and regularly inspected and maintained.

Warranty Exclusions

Dietzel-Univolt does not cover deterioration of flexible conduit due to any of the following circumstances:- Incorrect conduit selected for application and environment. - Incorrect installation of flexible conduit. - Failure to follow Dietzel-Univolt's selection and installation guidance. - Flexible conduit damage or deterioration other than by UV radiation.

Limited Liability: Dietzel-Univolt's liability is strictly limited to the supply of replacement conduit only.

For more detailed information concerning our products including technical data and standards we kindly ask you to contact our Export Department.

Any reproduction of this catalogue, partly or in whole, is only permitted with the written consent of Dietzel GmbH. Errors and omissions excepted.

FLEXIBLE CONDUIT CONTRACTOR PACKS / ENCLOSURE BOXES

CONTRACTOR PACKS



Part No.	A-Code	Description	Pk Qty
CFX20B	100070	20mm Black Pack c/w 10 glands	1pc
CFX25B	100071	25mm Black Pack c/w 10 Glands	1pc
UNICON20W	98319	20mm White Contractor Pack c/w 10 Glands	1pc
UNICON25W	98320	25mm White Contractor Pack c/w 10 Glands	1pc
UNICON20-IP68B	98321	20mm Contractor Pack - IP68 Rated c/w 10 Glands Black	1pc
UNICON25-IP68B	98322	25mm Contractor Pack - IP68 Rated c/w 10 Glands Black	1pc

ENCLOSURES, KNOCKOUT BOXES WHITE / BLACK



Part No.	A-Code	Description	Pk Qty
PKG100 W	16402	Enclosure Box 105x105x64 with knockouts 20mm & 25mm White	5pcs
PKG100B	16404	Enclosure Box 105x105x64 with knockouts 20mm & 25mm Black	5pcs
PKG200W	12344	Enclosure Box 200x150x85 with knockouts 20mm to 32mm White	2pcs
PKG200B	10789	Enclosure Box 200x150x85 with knockouts 20mm to 32mm Black	2pcs

ENCLOSURES, PLAIN SIDED WHITE / BLACK



Part No.	A-Code	Description	Pk Qty
PKG100OPW	850	Enclosure Box 105x105x64 Plain Sides White	5pcs
PKG100OPB	848	Enclosure Box 105x105x64 Plain Sides Black	5pcs
PKG200OPW	11629	Enclosure Box 200x150x85 Plain Sides White	2pcs
PKG200OPB	10790	Enclosure Box 200x150x85 Plain Sides Black	2pcs
PKG300OPW	13006	Enclosure Box 300x200x125 Plain Sides & Hinged Lid White	1pcs
PKG300OPB	13010	Enclosure Box 300x200x125 Plain Sides & Hinged Lid Black	1pcs

The Professional. With glide core. Halogen-free.



HFX **Xtreme**

BENDING SPRINGS



Part No.	A-Code	Description	Pk Qty
BSL 20	9135	20mm Bending Spring L/G	1pc
BS 20 SE	84065	20mm Bending for use with L/G Conduit LSF0H	1pc
BS 20-LSF	8912	20mm Bending Spring H/G LSF	1pc
BSL 25	9136	25mm Bending Spring L/G	1pc
BS 25 SE	84066	25mm Bending for use with L/G Conduit LSF0H	1pc
BS25-LSF	8913	25mm Bending Spring H/G LSF	1pc

DRAW TAPE



Part No.	A-Code	Description	Pk Qty
UNIDT 10	85861	10m Nylon Draw Tape	1pc
UNIDT 20	85862	20m Nylon Draw Tape	1pc
UNIDT 30	85863	30m Nylon Draw Tape	1pc

CUTTING TOOL



Part No.	A-Code	Description	Pk Qty
USZ-S	15008	Cutting Tool for Conduits up to 32mm and Trunking up to 25x40	1pc

CONDUIT BENDING BLOCK



Part No.	A-Code	Description	Pk Qty
GP 23-36	938	Conduit Bending Block	1pc

SEALING CEMENT



Part No.	A-Code	Description	Pk Qty
VKS 250/1	87261	250ml Sealing Cement	1pc

IP68 DOME TOP CABLE GLANDS

6MM TO 18MM CABLE GLANDS, BLACK, WHITE



Part No.	A-Code	Description	Pk Qty
UNIGM 20 B	85855	6mm - 12mm Cable Gland - Black c/w Locknut	100pcs
UNIGM 20 W	85857	6mm - 12mm Cable Gland - White c/w Locknut	100pcs
UNIGM 25 B	85858	13mm - 18mm Cable Gland - Black c/w Locknut	100pcs
UNIGM 25 W	85860	13mm - 18mm Cable Gland - White c/w Locknut	100pcs

WALL PLUG



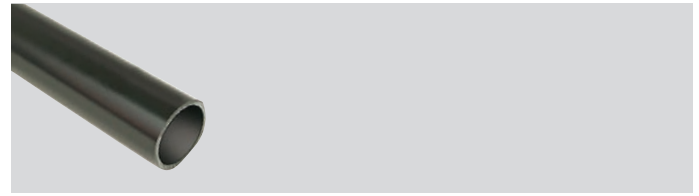
Part No.	A-Code	Description	Pk Qty
DSD35	8226	Wall Plug	1pc

RIGID CONDUIT LIGHT LSF0H EN-61386-21



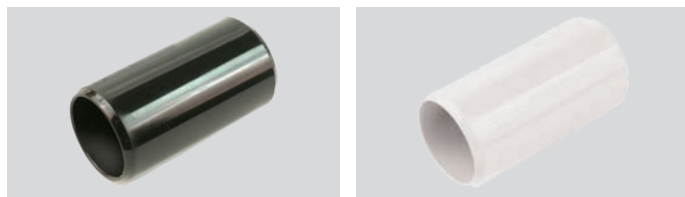
Part No.	A-Code	Description	Pk Qty
HFIR 20 White	87179	HFT Rigid Conduit, Light Gauge 20mm	102m
HFIR 25 White	87180	HFT Rigid Conduit, Light Gauge 25mm	60m
HFIR 32 White	87181	HFT Rigid Conduit, Light Gauge 32mm	45m

RIGID CONDUIT HEAVY LSF0H EN-61386-21



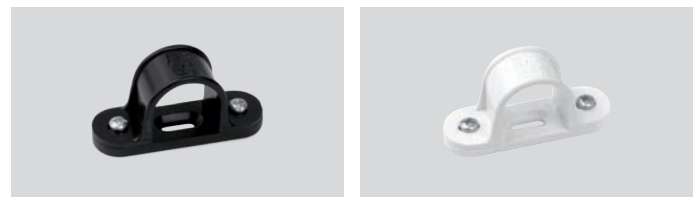
Part No.	A-Code	Description	Pk Qty
HFBS 20 Black	64967	HFT Rigid Conduit Heavy Gauge 20mm	111m
HFBS 25 Black	64968	HFT Rigid Conduit Heavy Gauge 25mm	57m

SLIP TYPE COUPLERS



Part No.	A-Code	Description	Pk Qty
HFSM 20 White	37036	Slip Type Coupler 20mm White	100pcs
HFSM 20 Black	20557	Slip Type Coupler 20mm Black	100pcs
HFSM 25 White	38572	Slip Type Coupler 25mm White	50pcs
HFSM 25 Black	20558	Slip Type Coupler 25mm Black	50pcs
HFSM 32 White	38573	Slip Type Coupler 32mm White	25pcs

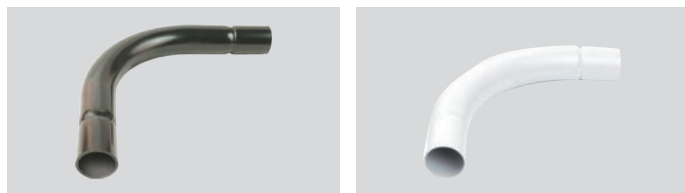
SPACER BAR SADDLES BLACK SPACER BAR SADDLES WHITE



Part No.	A-Code	Description	Pk Qty
HFSBS 20 White	37033	Spacer Bar Saddle 20mm White	50pcs
HFSBS 20 Black	9629	Spacer Bar Saddle 20mm Black	50pcs
HFSBS 25 White	41621	Spacer Bar Saddle 25mm White	50pcs
HFSBS 25 Black	9630	Spacer Bar Saddle 25mm Black	50pcs
HFSBS 32 White	41853	Spacer Bar Saddle 32mm White	50pcs

NORMAL BEND BLACK

NORMAL BEND WHITE



Part No.	A-Code	Description	Pk Qty
HFSB 20 White	38577	Normal Bend, Slip Type 90 Degree, 20mm White	25pcs
HFSB 20 Black	20826	Normal Bend, Slip Type 90 Degree, 20mm Black	25pcs
HFSB 25 White	38578	Normal Bend, Slip Type 90 Degree, 25mm White	20pcs
HFSB 25 Black	20827	Normal Bend, Slip Type 90 Degree; 25mm Black	20pcs
HFSB 32 White	38579	Normal Bend, Slip Type 90 Degree, 32mm White	1pc

INSPECTION BEND BLACK

INSPECTION BEND WHITE



Part No.	A-Code	Description	Pk Qty
HFIB 20 White	37127	Inspection Bend 20mm White	50pcs
HFIB 20 Black	9643	Inspection Bend 20mm Black	50pcs
HFIB 25 White	86344	Inspection Bend 25mm White	20pcs
HFIB 25 Black	9644	Inspection Bend 25mm Black	20pcs

INSPECTION TEE BLACK

INSPECTION TEE WHITE



Part No.	A-Code	Description	Pk Qty
HFIT 20 White	37133	Inspection Tee 20mm White	50pcs
HFIT 20 Black	9640	Inspection Tee 20mm Black	50pcs
HFIT 25 Black	9641	Inspection Tee 25mm Black	20pcs



Safety First: Univolt HFT



FEMALE ADAPTORS BLACK

FEMALE ADAPTORS WHITE



Part No.	A-Code	Description	Pk Qty
HFAFT/MBS 20 White	37043	Female Adaptor 20mm White	100pcs
HFAFT/MBS 20 Black	9674	Female Adaptor 20mm Black	100pcs
HFAFT/MBS 25 White	41465	Female Adaptor 25mm White	50pcs
HFAFT/MBS 25 Black	9675	Female Adaptor 25mm Black	50pcs
HFAFT/MBS 32 White	64271	Female Adaptor 32mm White	20pcs

MALE ADAPTORS BLACK

MALE ADAPTORS WHITE



Part No.	A-Code	Description	Pk Qty
HFAMT/LR 20 White	40363	Male Adaptor 20mm White	100pcs
HFAMT/LR 20 Black	9680	Male Adaptor 20mm Black	100pcs

CONDUIT CLIP WHITE AND BLACK



Part No.	A-Code	Description	Pk Qty
HFCL 20 White	37041	Conduit Clip 20mm White	100pcs
HFCL 20 Black	9635	Conduit Clip 20mm Black	100pcs
HFCL 25 White	38597	Conduit Clip 25mm White	100pcs
HFCL 25 Black	9636	Conduit Clip 25mm Black	100pcs
HFCL 32 White	38598	Conduit Clip 32mm White	100pcs

CIRCULAR LIDS BLACK

CIRCULAR LIDS WHITE



Part No.	A-Code	Description	Pk Qty
HFCBL 16-25 BK	9665	16-25mm Circular Lids Black	100pcs
HFCBL 16-25 WH	37142	16-25mm Circular Lids White	100pcs
HFCBL 32 WH	86343	32mm Circular Lids White	100pcs

For HFT adhesive please contact the Univolt sales office

CONDUIT BOXES

TERMINAL BOXES WHITE AND BLACK



Part No.	A-Code	Description	Pk Qty
HFCB 20/1W	37038	Terminal Box 20mm White	25pcs
HFCB 20/1B	9646	Terminal Box 20mm Black	25pcs
HFCB 25/1W	41622	Terminal Box 25mm White	25pcs
HFCB 25/1B	9647	Terminal Box 25mm Black	25pcs
HFCB 32/1W	86336	Terminal Box 32mm White	10pcs

THROUGH BOXES WHITE AND BLACK



Part No.	A-Code	Description	Pk Qty
HFCB 20/2W	37039	Through Box 20mm White	25pcs
HFCB 20/2B	9650	Through Box 20mm Black	25pcs
HFCB 25/2W	41459	Through Box 25mm White	25pcs
HFCB 25/2B	9651	Through Box 25mm Black	25pcs
HFCB 32/2W	86337	Through Box 32mm White	10pcs

ANGLE BOXES WHITE AND BLACK



Part No.	A-Code	Description	Pk Qty
HFCB 20/A W	37136	Angle Box 20mm White	25pcs
HFCB 20/A B	9654	Angle Box 20mm Black	25pcs
HFCB 25/A W	41461	Angle Box 25mm White	25pcs
HFCB 25/A B	9655	Angle Box 25mm Black	25pcs
HFCB 32/A W	86406	Angle Box 32mm White	10pcs

TEE BOXES WHITE AND BLACK



Part No.	A-Code	Description	Pk Qty
HFCB 20/3 W	37040	Tee Box 20mm White	25pcs
HFCB 20/3 B	9658	Tee Box 20mm Black	25pcs
HFCB 25/3 W	41460	Tee Box 25mm White	20pcs
HFCB 25/3 B	9659	Tee Box 25mm Black	20pcs

HFT PLIABLE CONDUIT - PC

PLIABLE CONDUIT



Part No.	A-Code	Description	Pk Qty
HFXP-HT 20 Black	11302	HFT Chlorine Free Pliable Conduit Medium Gauge 20mm	50m
HFXP-HT 25 Black	11303	HFT Chlorine Free Pliable Conduit Medium Gauge 25mm	50m

STRAIGHT GLANDS



Part No.	A-Code	Description	Pk Qty
HGL 20/20 Black	11790	HFT 20mm Straight Gland Black	50pcs
HGL 20/20 Grey	57259	HFT 20mm Straight Gland Grey	50pcs
HGL 25/25 Black	12609	HFT 25mm Straight Gland Black	50pcs
HGL 25/25 Grey	57260	HFT 25mm Straight Gland Grey	50pcs

HFT ENCLOSURE BOXES

ENCLOSURE BOXES



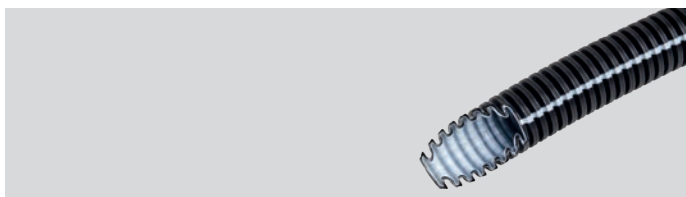
Part No.	A-Code	Description	Pk Qty
PKG 100 OP Grey	23760	105x105x66mm with knock-outs	5pcs
PKG 100 OP Black	528	105x105x66mm with knock-outs	5pcs
PKG 100 OP T Black	27264	105x105x66mm with knock-outs - Transparent Lid	5pcs
PKG 100 OP White	37325	105x105x66mm with knock-outs	5pcs
PKG 200 OP Grey	23761	200x150x85mm with knock-outs	2pcs
PKG 200 OP Black	10685	200x150x85mm with knock-outs	2pcs
PKG 200 OP T Black	18645	200x150x85mm with knock-outs - Transparent Lid	2pcs
PKG 200 OP T White	42558	200x150x85mm with knock-outs - Transparent Lid	2pcs
PKG 200 OP White	37326	200x150x88 with knock-outs	2pcs
PKG 300 OP H Black	27682	300x200x125mm with knock-outs - Raised Lid	1pc
PKG 300 OP Grey	23762	300x200x125mm with knock-outs	1pc
PKG 300 OP Black	13019	300x200x125mm with knock-outs	1pc
PKG 300 OP T Grey	33582	300x200x125mm with knock-outs - Transparent Lid	1pc
PKG 300 OP T Black	13022	300x200x125mm with knock-outs - Transparent Lid	1pc
PKG 300 OP T White	42555	300x200x125mm with knock-outs - Transparent Lid	1pc
PKG 300 OP TH Grey	80877	300x200x125mm with knock-outs - Transparent Raised Lid	1pc
PKG 300 OP TH Black	22883	300x200x125mm with knock-outs - Transparent Raised Lid	1pc
PKG 300 OP White	65716	300x200x125mm with knock-outs - Raised Lid	1pc



The Lightest. With glide core. Halogen-free.



HFT MEDIUM GAUGE SELF RECOVERING (750N) BLACK
- PP BLEND



Part No.	A-Code	Description	Pk Qty
HFXP-TURBO PRO 16 B	87169	16mm HFT Medium Gauge Self Recovering Black	50m
HFXP-TURBO PRO 20 B	87170	20mm HFT Medium Gauge Self Recovering Black	50m
HFXP-TURBO PRO 25 B	87171	25mm HFT Medium Gauge Self Recovering Black	50m
HFXP-TURBO PRO 32 B	87172	32mm HFT Medium Gauge Self Recovering Black	25m
HFXP-TURBO PRO 40 B	87173	40mm HFT Medium Gauge Self Recovering Black	25m
HFXP-TURBO PRO 50 B	87174	50mm HFT Medium Gauge Self Recovering Black	25m

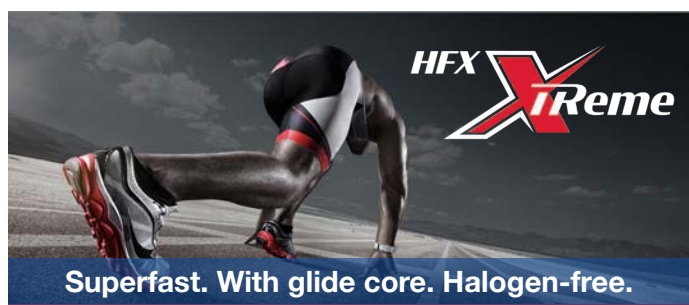
HFT MEDIUM GAUGE (750N) BLACK - PC



Part No.	A-Code	Description	Pk Qty
HFXP- HT 12 B	16574	12mm HFT Medium Gauge Black	50m
HFXP- HT 16 B	11301	16mm HFT Medium Gauge Black	50m
HFXP- HT 20 B	11302	20mm HFT Medium Gauge Black	50m
HFXP- HT 25 B	11303	25mm HFT Medium Gauge Black	50m
HFXP- HT 32 B	11304	32mm HFT Medium Gauge Black	25m
HFXP- HT 40 B	13254	40mm HFT Medium Gauge Black	25m
HFXP- HT 50 B	13255	50mm HFT Medium Gauge Black	25m
HFXP- HT 63 B	19897	63mm HFT Medium Gauge Black	25m

HFT Conduit Material Key

PVC	Polyvinyl Chloride
PP	polypropylene
PC	Polycarbonate
PA	Polyamide
PE	Polyethylene



HFT LIGHT GAUGE (320N) BLACK - PA



Part No.	A-Code	Description	Pk Qty
HFXS 12 B	23654	12mm HFT Light Gauge Black	50m
HFXS 16 B	23655	16mm HFT Light Gauge Black	50m
HFXS 20 B	23656	20mm HFT Light Gauge Black	50m
HFXS 25 B	23657	25mm HFT Light Gauge Black	50m
HFXS 32 B	23658	32mm HFT Light Gauge Black	25m
HFXS 40 B	23659	40mm HFT Light Gauge Black	25m
HFXS 50 B	23660	50mm HFT Light Gauge Black	25m
HFXS 63 B	23661	63mm HFT Light Gauge Black	25m

HFT LIGHT GAUGE (320N) GREY - PA



Part No.	A-Code	Description	Pk Qty
HFXS 12 G	15902	12mm HFT Light Gauge Grey	50m
HFXS 16 G	12903	16mm HFT Light Gauge Grey	50m
HFXS 20 G	12904	20mm HFT Light Gauge Grey	50m
HFXS 25 G	12905	25mm HFT Light Gauge Grey	50m
HFXS 32 G	12906	32mm HFT Light Gauge Grey	25m
HFXS 40 G	12907	40mm HFT Light Gauge Grey	25m
HFXS 50 G	12908	50mm HFT Light Gauge Grey	25m
HFXS 63 G	25054	63mm HFT Light Gauge Grey	25m

HFT LIGHT GAUGE (320N) ORANGE - PE



Part No.	A-Code	Description	Pk Qty
FXPY 16 O	65098	16mm HFT Light Gauge Orange	100m
FXPY 20 O	65099	20mm HFT Light Gauge Orange	100m
FXPY 25 O	65100	25mm HFT Light Gauge Orange	50m
FXPY 32 O	65101	32mm HFT Light Gauge Orange	50m



SAFETY FIRST FOR CONTRACTORS AT NEW HOSPITAL DEVELOPMENT

PROJECT: HEATHERWOOD
PRODUCT: PVC CONDUIT
SECTOR: MEDICAL

Contractor, White Horse Electrical, has installed a full range of cable containment solutions from Dietzel Univolt.

Large quantities of Univolt's PVC LSF as well as new wire basket cable containment has been installed throughout the vast site.

Contractor, White Horse Electrical, has opted for a full range of cable containment solutions from Dietzel Univolt, including PVC conduit and conduit accessories in an LSF specification as part of the firm M&E works at Heatherwood Hospital in Ascot.

The new £98m Heatherwood Hospital is set to replace the 100-year-old existing facility and is due for completion by 2021.

The team at White Horse Electrical has worked closely with Univolt's Steve Davis during the specification phase to identify the safest and most robust products available, presenting the firm's unique solution to the main contractor and end user.



CABLE CONTAINMENT FOR £11M DEVELOPMENT AT HMS CAMBRIA

PROJECT: HMS CAMBRIA CLIENT: BLUES ELECTRICAL
PRODUCT: UPVC LSF CONDUIT AND ACCESSORIES AND WIRE BASKET

Contractor, White Horse Electrical, has installed a full range of cable containment solutions from Dietzel Univolt.

Large quantities of Univolt's PVC LSF as well as new wire basket cable containment has been installed throughout the vast site. The new HMS Cambria building in Cardiff Bay will deliver state-of-the-art training and education facilities as well as accommodation and office suites alongside social and fitness areas for use by the Royal Naval Reserve, Royal Marines Reserve and University Royal Naval Units.

Blues Electrical will carry out a full Electrical installation at the site which is being managed by main contractor Morgan Sindall. The firm has opted for the Univolt conduit with an LSF (Low Smoke Flame Retardancy) specification, as well as a range of accessories and our latest product offering, the quick fix wire basket.



UNIVOLT GOES LARGE WITH WEMBLEY SPECIFICATION

PROJECT: WEMBLEY
PRODUCT: MAXI TRUNKING
SECTOR: RESIDENTIAL

Contractor, White Horse Electrical, has installed a full range of cable containment solutions from Dietzel Univolt.

Roc Electrical has installed 500 lengths of Univolt's 150 x 100 maxi trunking.

EO5 forms part of the transformational 85-acre Wembley project.

Univolt products are installed throughout all apartments.

Contractor, Roc Electrical, has specified Univolt's maxi-trunking as part of the firm's M&E works on the latest phase of Quintain's Wembley Park development 'EO5'.

Forming part of the development's 85-acre project which sees the transformation of an abandoned industrial area into a public facing mixed use space, EO5 includes the construction of three tower block's ranging between 10 and 21 storey's high and encompassing 458 apartments.

Roc Electrical will be delivering much of the mechanical and electrical installation, using in excess of 500 lengths of Univolt's 150 x 100 maxi trunking. The products will be installed in all apartments supporting the feed to the consumer unit and data cabinet via the riser cupboards.



UNIVOLT BASKET FOR GREATER BRIGHTON METROPOLITAN COLLEGE

PROJECT: GREATER BRIGHTON METROPOLITAN COLLEGE
CLIENT: MITIE ENGINEERING
PRODUCT: WIRE BASKET

Large quantities of Univolt's wire basket has been specified by contractor Mitie Engineering, as part of a £21million extension at Greater Brighton Metropolitan College.

The move by the college aims to equip students from Brighton with vital digital and creative skills and will be used to house its new Centre for Creative and Digital Industries.

Mitie Engineering is delivering all mechanical and electrical works and has chosen Univolt's quality wire basket via independent wholesaler, Quantum.

Univolt's wire basket is increasingly being recognised as the go to cable containment of choice for specifiers within the education sector and this makes the latest in a spate of projects secured for the specialist manufacturing firm.

BESPOKE POWER POLE SPECIFIED FOR IMPERIAL COLLEGE LONDON

PROJECT: IMPERIAL COLLEGE LONDON
PRODUCT: POWER POLE

Specialist cable containment manufacturer, Univolt UK, has seen its power pole in a bespoke variation, specified by contractors on site at Imperial College London's latest campus development.

A total of 72 power poles will be fitted across the new building in the unique specification. With the standard square power pole typically measuring 100 x 100, this Univolt product has been designed with a specific RAL colour, in a round surface pole and hexagonal base, with the added feature of a telescopic arm adjusting from 100mm to 400mm for ease of installation and flexibility above the ceiling soffit.

Photo by
Herry Lawford

"The customer wanted to include 10 single power and data sockets to be fitted under desk height, which couldn't be achieved with a standard power pole. We proposed the use of a mosaic socket which allowed us to condense all sockets down into the required area, achieving the clients aspirations.

"We're keen to ensure we meet all of our clients' needs in all areas of our operation and are seeing a rising demand for bespoke specifications, as was the case here.

"Education and student accommodation are important sectors for our business and our brand is becoming increasingly synonymous with this area of construction. Imperial College London is one of the UK's top ten universities and owns and manages some of the capitals most prestigious buildings. It's great to be part of their latest portfolio development scheme."

STEVE DAVIS,
NATIONAL BUSINESS DEVELOPMENT
MANAGER, DIETZEL-UNIVOLT

UNIVOLT'S SLR TRUNKING FOR MAIDSTONE INNOVATION CENTRE

PROJECT: WORKING ENVIRONMENTAL
PRODUCT: SLR TRUNKING

Electrical contractors delivering a full M&E package at Maidstone Innovation Centre have opted for Univolt's SLR trunking with a light grey lid.

Working Environmental is working as part of the Rydon Construction supply chain and is installing Univolt's SLR trunking solution throughout.

The new 30,000sq ft office facility is due for completion this summer and has been designed to create space for SMEs in the life science, healthcare and med-tech sectors. The project has been driven by the local council who are keen to encourage more people to start their med-tech businesses in Maidstone, considered the business capital of Kent.

The site is located within the Kent Medical Campus, just off Junction 7 of the M20. Maidstone Borough Council is reinvesting over £5.2m in recovered business rates from the enterprise zone into the building.

"Our SLR product is perfect for this type of modern, clean environment with its bright white aesthetic and curved profile, achieving DDA compliance through the addition of a light grey lid."

"We've worked closely with the team at Working Environmental to ensure that they make the perfect specification for this great project."

STEVE DAVIS,
NATIONAL BUSINESS DEVELOPMENT
MANAGER, DIETZEL-UNIVOLT

